



The Women's Health Study

From Adolescence to Adulthood

2018 Newsletter

A Letter from the Directors:

Dear all,

Thank you for your continued participation in the WHS:A2A study. We are proud of all of the work we have done this year, and are excited to share these updates with you. Read on to learn more about our team's new research publications, new team members, studies that are open for enrollment, and much more.

This letter is also a reminder to our annual participants to expect two emails from us soon: one with a contact information update and one with a link to your annual health questionnaire. **What makes this research project truly special is to be able to follow patients over the years. We appreciate your past contributions, and hope you'll help us achieve our goals by continuing to participate.** Remember that you can contact the study team via email, phone or online with any questions. Thank you again for your important contributions to women's health research.

Sincerely,

Marc R. Laufer, MD

Director

Stacey A. Missmer, ScD

Scientific Director

Now enrolling

Pain Study: The Children's Department of Anesthesia is recruiting young women 14-22 years old to answer a one-time questionnaire and participate in sensory testing.

NOTE Trial: Dr. Amy DiVasta is leading this 6-month study of a non-hormonal medication for endometriosis.

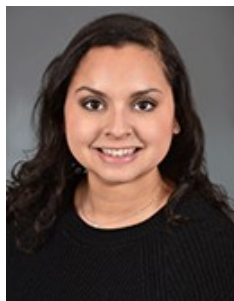
Interested? Please email bce@childrens.harvard.edu for more information.

New Staff Spotlight



Madsy Schneider, Research Assistant—Madsy is a recent graduate of Middlebury College in Vermont where she majored in Molecular Biology and Biochemistry. She is originally from Maine and moved to Boston to work with the WHS:A2A study. Madsy enrolls patients and attends surgeries at both Boston Children's Hospital and Brigham and Women's Hospital. Madsy's favorite part of being a research assistant is working with all of the wonderful patients and passionate physicians.

Roshni Dave, Research Assistant—Roshni graduated from Northeastern University in 2017 with a degree in Behavioral Neuroscience. Roshni enrolls patients and attends surgeries at both hospitals. Roshni joined our team in August 2017. She enjoys her work as an RA and hopes to become a Physician Assistant.



Irma Vlasac, Research Assistant—Irma graduated from Worcester Polytechnic Institute in 2014 with a Bachelor of Science in Biology and Biotechnology. Irma loves being a research assistant for WHS:A2A because she makes a positive impact on women's health through personal interactions with both patients and physicians and by contributing to research pursued through the BCE. She hopes to attend medical school in the future.



Boston Center for Endometriosis



New Funding

The J. Willard and Alice S. Marriott Foundation provided a three-year award in support of the Boston Center for Endometriosis' research endeavors. The funding will be used to support the Center's major research project: building a one-of-a kind database and biorepository to fuel discovery in endometriosis from adolescence through adulthood. The gift also establishes the Marriott Fund for Clinical Innovation in Endometriosis, which will support projects aimed at faster diagnosis and improved treatment for young women.

Conference Presentations

Each year, our researchers travel to domestic and international conferences to present research results, meet with collaborators, and stay up-to-date in the field. This year, WHS:A2A leaders presented research findings at:

- ◆ American Society for Reproductive Medicine Scientific Congress
- ◆ The World Congress of Endometriosis
- ◆ North American Society for Pediatric and Adolescent Gynecology Annual Clinical Research Meeting
- ◆ New England Fertility Society Annual Meeting
- ◆ International Pelvic Pain Society Meeting



Ms. Jerri Miller and Dr. Amy DiVasta (left), and Dr. Paula Brady (right)

Tell us about you

If your email address, preferred phone number, or mailing address changes, we want to know! Once per year we will send you a Contact Information Update form, but please reach out to us anytime your information changes.

Reconsent forms

Having young women participate in our study is what makes us unique. If you enrolled as a minor (under 18 years old), you needed a parent's permission. When you turn 18, you can continue participating, but you need to sign a new consent form, without a parent. The reconsent form will be mailed to you on your birthday. You can choose to complete it on paper or online. Please complete it as soon as possible to make sure you do not miss your chance to continue participating in WHS:A2A.

Selected Recent Publications

Sacha CR, **Farland LV**, **Missmer SA**, **Anchan RM**. Characteristics of women with recurrent endometriosis pain after laparoscopy and levonorgestrel intrauterine device placement. *Journal of Endometriosis and Pelvic Pain Disorders* 2017; DOI:10.5301/jeppd.5000305

Brady PC, **Missmer SA**, **Laufer MR**. Bladder involvement in Stage I endometriosis. *J Pediatr Adolesc Gynecol*. 2017 Aug; 30(4):503-504. PMID: 28400322

Brady PC, **Missmer SA**, **Laufer MR**. Hepatic adenomas in adolescents and young women with endometriosis treated with Norethindrone Acetate. *Journal of Pediatric and Adolescent Gynecology* 2017 Jun; 30(3):422-424. PMID: 28024920

Farland LV, Eliassen AH, Tamimi RM, Spiegelman D, Michels K, **Missmer SA**. History of breastfeeding and risk of incident endometriosis: prospective cohort study. *BMJ* 2017; 358:j3778. PMID: 28851765

Parasar P, Sacha CR, Ng N, McGuirk ER, Chinthala S, Ozcan P, Lindsey J, Salas S, **Laufer MR**, **Missmer SA**, **Anchan RM**. Differentiating mouse embryonic stem cells express markers of human endometrium. *Reprod Biol Endocrinol* 2017; 15(1):52. PMID: 28716123

What's next?

This year, our goal is to recruit our 1,500th study participant! At over 1,000 current participants, we are well on our way to meeting this goal. Stay tuned to our Facebook page and website for more updates on recruitment, new publications, and presentations.